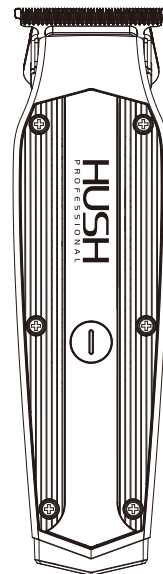


HUSH
PROFESSIONAL



Eagle Fortress International Limited

PATENTS:
2022 3054 7095.4
2020 3024 4731.7
2020 2310 2170.0
2019 2171 4464.3

HU22T
PROFESSIONAL HAIR TRIMMER
MANUAL



SAFETY PRECAUTIONS

This trimmer has a built-in rechargeable lithium battery, please do not use in high temperature environment.

To avoid overheating, fire or explosion.

Use a power supply that matches the voltage rating indicated on the power adapter.

Insert the power adapter plug to the electric socket completely while charging.

Keep away from water or chemicals while in use.

To avoid shock or damage to the trimmer.

Do not immerse the main engine in water or flush trimmer with water.

Stop using the power adapter immediately & replace right away if the cord on the power adapter is damaged.

Unplug from power adapter not in use for a long time.

Plug or unplug power adapter should hold the insulating part instead of power cord.



WARNING

Children should be supervised to ensure that they do not play with the appliance.

Do not store within the reach of children. Putting parts such as blades or lubricant containers of the clipper into mouth may cause accidental injury.

Do not plug or unplug the power adapter with wet hands.

To avoid the risk of electric shock and cause injury.

Unplug before cleaning the clipper.

Before cleaning and maintenance, please power off the clipper to avoid the short circuit and electric shock.

Only use the original accessories and power adapter manufactured by HUSH.

Avoiding the occurrence of fire due to overheating of the charging circuit due to different specifications of the power adapter.

Do not disassemble or repair the clipper on your own.

Check carefully the blade for damage or deformation before use.

To avoid the skin injury.

Extended use in temperature below -10°C or above 40°C is not recommended as it may damage the battery.

Stop using the clipper immediately when:

The machine or power adapter is deformed or hot.

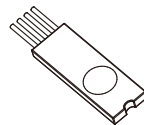
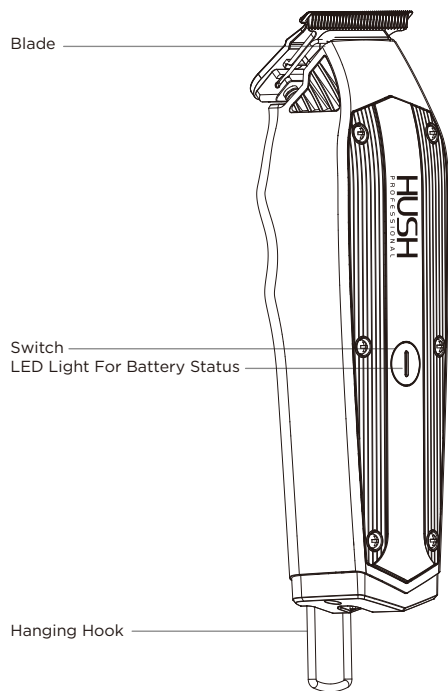
The machine or power adapter has a burning smell.

The machine or power adapter occurs abnormal noise within use.

Please return the clipper to the distributor or manufacturer for service.

This appliance contains batteries that are only replaceable by skilled persons.

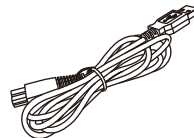
PRODUCT OVERVIEW



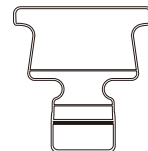
Brush



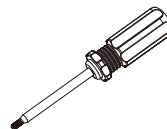
Lubricant



Power Cord



Blade Positioning Protector



Blade adjustment screwdriver

CHARGING OPERATION



Voltage : 5V $\overline{=}$ 1A

Battery Capacity: 3.7V 1400mAh

Charging Time: 2 hours

Usage Time : 2.5 hours

LED indicator status when charging

When the battery power is low, the red light will flash.

When the battery power is high, the white light will flash.

When the battery power is full, the white light will remain on.

LED indicator status when in use

When the battery power is high, the white light will remain on.

When the battery power is low, the red light will remain on.

When the trimmer has less than 10 minutes of usable time, the red light will flash.

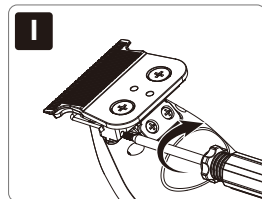
When the trimmer is in undervoltage status, the red light will flash for 3 seconds and turn off.

Please turn off the trimmer and unplug the power adapter before operating.

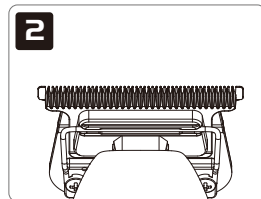
How to adjust blade to 0mm cutting distance



1. Please shut down the trimmer and unplug the power adapter.
2. After the blade is installed, be sure to carefully check whether the corresponding parts have been firmly attached.
3. Check the adjustable screws whether has been firmed before using.
4. Do not try to sharpen or alter the blade by yourself to avoid damaging your machine.



Using blade adjustment screwdriver to adjust proper cutting distance.

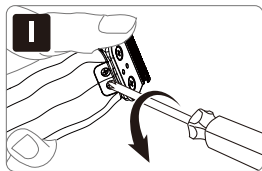


Check the upper and lower blades are in the center and parallel area.

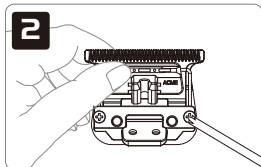
Please read the blade maintenance instructions carefully before operating. Following the instructions when removing and installing the blade to avoid improper assembly.

Blade removal

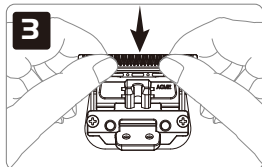
Hold the trimmer as shown in figure 1 on the right, loosen the screws shown, and remove the blade. When removing the blade, please hold the blade while holding the trimmer to prevent the blade from falling and being damaged (the blade is sharp). Pay attention to protect your hands.



How to adjust blade to 0mm cutting distance:



Take off the blade, loosen adjusting screws half a turn.

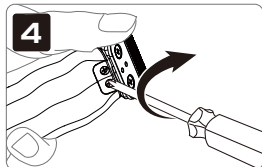


Push the upper blade down to reset it and tighten the screw.

After the blade is installed, be sure to carefully check whether the corresponding parts have been firmly attached.

Blade installation

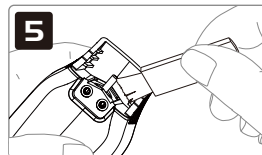
As shown in the figure 4, Align the screw holes between the blade and the fuselage, and tighten the screw with a screwdriver to install the blade (the blade must be tightened without loosening after the installation is completed)



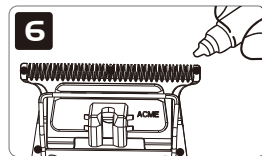
When handling the blade, do not try to sharpen or alter the blade by yourself to avoid damaging your machine.

Blade cleaning and maintenance

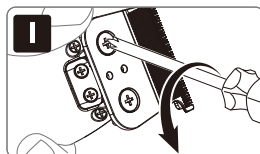
As shown in figure 5. Use a brush to clean the main body, the hair debris in the upper and lower blades and the movable blade.



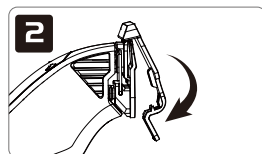
As shown in figure 6. After the cutter head is installed, drip 1-2 drops of lubricant on the corresponding five areas.



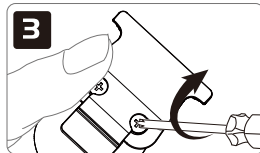
How to adjust the pitch of blade:



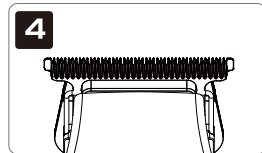
Loosen blade screws for half a turn.



Insert the blade positioning protector.



Tighten the screws.



Check the upper and lower blades are in the center and parallel area.

WARRANTY

1. Under normal conditions of proper use and maintenance of the product, the warranty period of the product is 1 year.
2. Expendable parts, such as blades, guards, lubricants, cleaning brushes, etc., are not under the terms of the warranty.
3. The following conditions are not covered by the warranty service:
 - Failure to show a valid warranty card, or the information on the warranty card is inconsistent with the actual product.
 - Trimmers with alterations will not be covered by the warranty service.
 - Proof of purchase must be included with warranty card.
 - Failure to follow the instructions in the instruction manual to operate and maintain the trimmer, causing it to malfunction or damage it by dropping the trimmer, immersing the trimmer in water and physical alterations of any kind will void the warranty service.
 - Product damage due to transportation or improper storage.
4. This warranty card is the only warranty certificate, please store it properly along with your proof of purchase.
5. The company will charge a maintenance fee for products without a warranty card or beyond the warranty period.
6. Please send the trimmer in need of repair or warranty directly to the designated HUSH domestic service center for repair, maintenance, or replacement.

WARRANTY CARD

Seller contact information	
Seller	
Address	
Tel	
Please fill in this warranty card on the spot immediately after purchase.	
Customer contact information	
Client name	
Contact phone	
Date produced	
Address	
Date purchased	